

CHICAGOELECTRIC



PROfacer™

Your 380SF made Better...Faster...Smarter

Turn your
Singlefacer
into a
Profacer

PRODrive™ —AC VECTOR DRIVE UPGRADE

Improve uptime and speed by replacing obsolete DC drives with AC Vector technology from Allen-Bradley



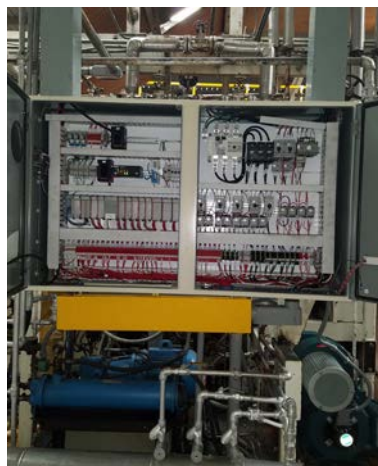
PowerFlex AC Controllers



150 HP AC Vector Main Drive Motor

PROControl —PLC & HMI CONTROL UPGRADE

Reduce the risk of old electronics—upgrade the obsolete PLC 5 with Allen-Bradley Logix PLC and RS5000 software



New PLC Remote I/O and Controls—Machine Mounted



New 15" HMI Touch Screen

Turn your Langston 380 Singlefacer
into a Profacer with the ProSeries of Upgrades

CHICAGO ELECTRIC

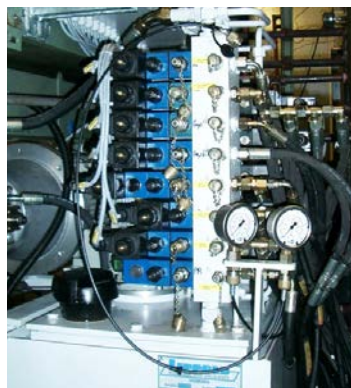


BETTER...FASTER...SMARTER

PROTouch —GLUE ROLL HYDRAULIC SOFT TOUCH

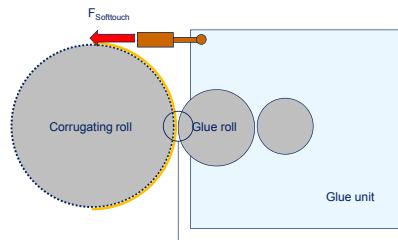


Langston 380
with SoftTouch Upgrade



New Hydraulic Power Unit
and ServoValve Controls

Eliminate operator adjustment of paper gap
with our patented SoftTouch upgrade
for automatic gap control



SoftTouch Upgrade
Eliminates Paper Gap
Adjustment

PROGLUE —AUTOMATIC GLUE DAM POSITIONING



New Glue Dam with Absolute
Position Feedback



BHS LightGrid Technology for
Paper Position Sensing

Improve the productivity of your 380SF
with “better than OEM” Automatic
Glue Dam Positioning

Chicago Electric is a world-class system integrator offering leading technology, comprehensive capability, and extensive experience. We are in the business of making our customers' manufacturing...
better...faster...smarter!

● technology

Chicago Electric is aligned with these global manufacturers of automation products.



● capability

Chicago Electric offers products, systems, and complete machine solutions for the corrugating industry. Our scope of services includes: design, engineering, panel assembly, programming, testing, mechanical fabrication, installation, startup, and field service.



Design — Engineering — Machining — Fabrication — Assembly — Programming — Installation — Start-up — Service

● experience

**CORR24**

Corr24 is the Chicago Electric brand of upgrades for the corrugating industry. More than 3,500 upgrade solutions have been installed in the last 25 years.

GLOBAL. CORRUGATED. PRODUCTIVITY. TECHNOLOGY